



Prefeitura Municipal de Porto Feliz

Rua Dr. Adhemar de Barros, 340, Centro, Porto Feliz/SP

Fone: (15) 3261-9000 - www.portofeliz.sp.gov.br

Escola Municipal de Música *Romário Antônio Barbosa*

Praça José Sacramento e Silva - 59 Centro, Porto Feliz/SP - 15 3262-4188

Material de violão dos dias: 02 a 09 de julho

Link: <https://www.youtube.com/watch?v=fYnF4mR7Mms>

Iniciantes

34

13.^a Etapa

EU SOU A NOTA SOL

6.^a
5.^a
4.^a
3.^a
2.^a
1.^a

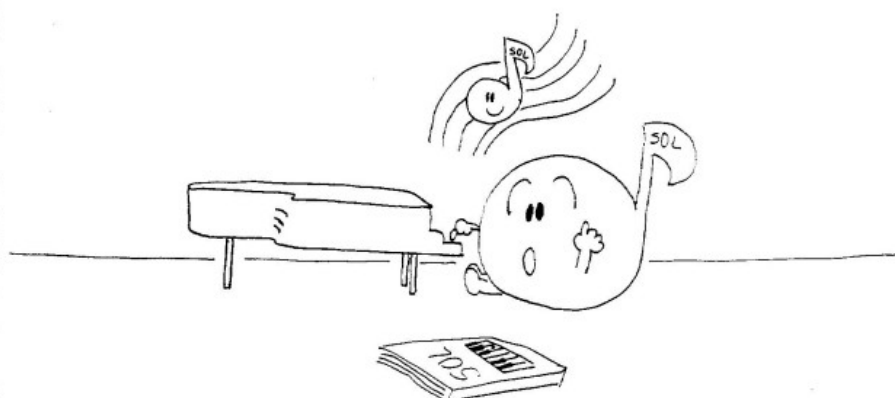
3.^a CORDA SOLTA

SOL

2 Tempos 1 Tempo

1 Tempo

APRENDENDO A NOTA SOL



COMBINANDO COM A COLCHEIA

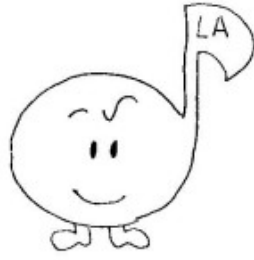


14.ª Etapa

EU SOU A NOTA LÁ

The diagram illustrates the concept of the note 'LÁ' (A4) on a guitar fretboard and its musical notation. On the left, a guitar fretboard is shown with the 3rd fret of the 1st string circled and labeled 'LÁ'. To the right, a treble clef staff shows a single note on the 3rd line, labeled 'LÁ'. Further right, a rhythmic exercise is shown on a treble clef staff with a 4/4 time signature. It consists of a quarter note on the 3rd line (labeled 'LÁ'), followed by two eighth notes on the 4th and 5th lines, and a quarter note on the 3rd line. Above the first two eighth notes is the label '2 Tempos' (two beats), and above the last quarter note is '1 Tempo' (one beat). Below the last quarter note is a bracket labeled '1 Tempo' (one beat).

APRENDENDO A NOTA LÁ



COMBINANDO COM A COLCHEIA

