



Prefeitura Municipal de Porto Feliz

Rua Dr. Adhemar de Barros, 340, Centro, Porto Feliz/SP

Fone: (15) 3261-9000 - www.portofeliz.sp.gov.br

Escola Municipal de Música *Romário Antônio Barbosa*

Praça José Sacramento e Silva - 59 Centro, Porto Feliz/SP - 15 3262-4188

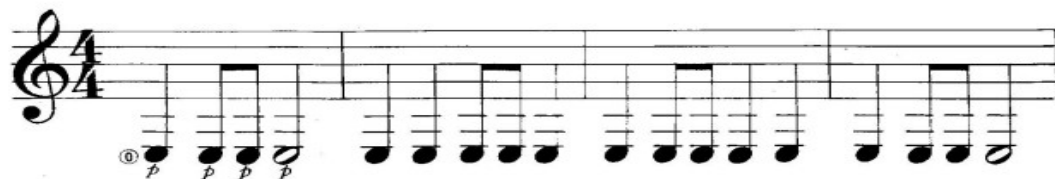
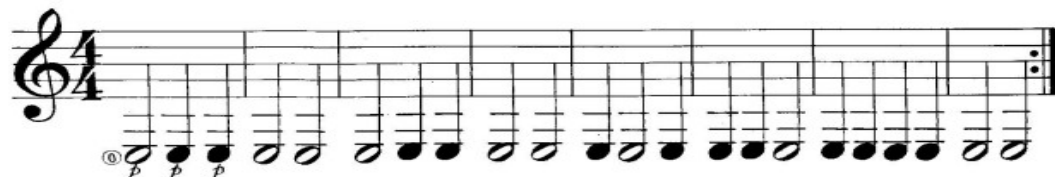
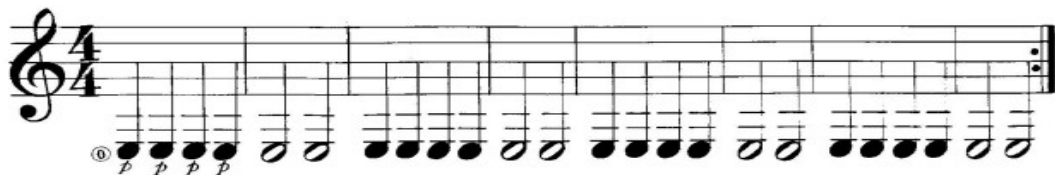
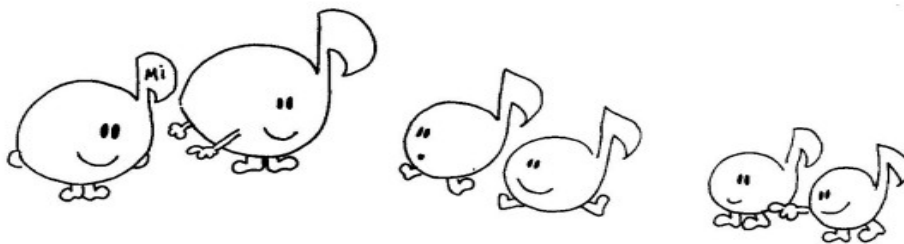
Material de violão para o portal dos dias: 19 a 23 de Outubro (semana 24)

Link: <https://www.youtube.com/watch?v=PIROTK1xBQw>

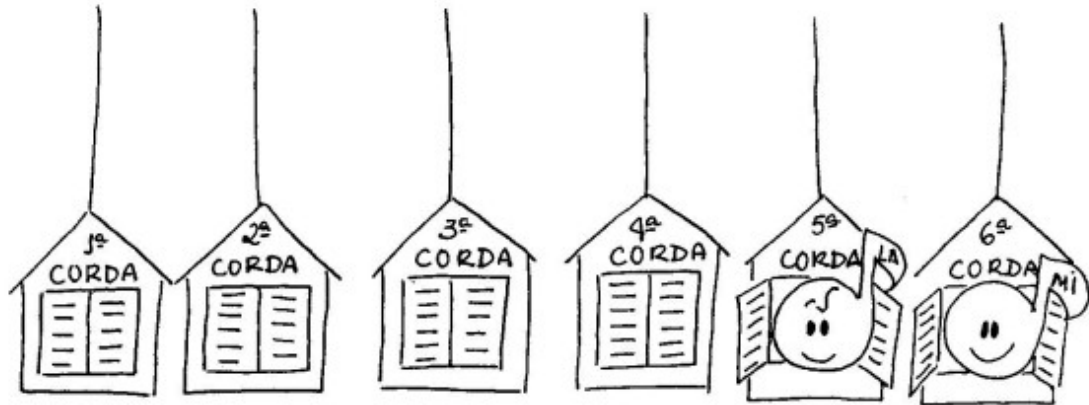
Iniciantes

56

APRENDENDO A NOTA MI

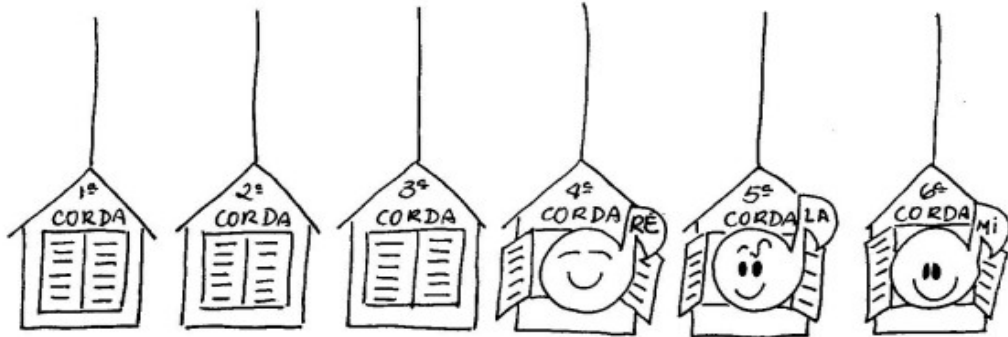


O MI DA 6.a E O LÁ DA 5.a CORDA



A musical score for guitar in 4/4 time, consisting of four staves. The first staff begins with a circled '1' and a 'p' (piano) dynamic. The second staff ends with a double bar line and repeat dots. The third staff begins with a circled '1' and a 'p' dynamic. The fourth staff ends with a double bar line and repeat dots. The music consists of various rhythmic patterns, including quarter notes, eighth notes, and sixteenth notes, often beamed together.

O RÉ DA 4.a, O LÁ DA 5.a
E O MI DA 6.a CORDA



Musical notation for page 58, consisting of four staves in 4/4 time. The first staff contains a sequence of notes: a whole note G4 (marked with a circled '1' and 'p'), followed by four eighth notes (F#4, E4, D4, C4), then a whole note G4 (marked with a circled '1'), followed by four eighth notes (F#4, E4, D4, C4), and finally a whole note G4 (marked with a circled '1'). The second staff continues with a sequence of notes: a whole note G4, followed by two eighth notes (F#4, E4), then two eighth notes (D4, C4), then a whole note G4, followed by two eighth notes (F#4, E4), then two eighth notes (D4, C4), and finally a whole note G4. The third staff contains a sequence of notes: a whole note G4 (marked with a circled '1' and 'p'), followed by four eighth notes (F#4, E4, D4, C4), then a whole note G4, followed by four eighth notes (F#4, E4, D4, C4), and finally a whole note G4. The fourth staff continues with a sequence of notes: a whole note G4, followed by two eighth notes (F#4, E4), then two eighth notes (D4, C4), then a whole note G4, followed by two eighth notes (F#4, E4), then two eighth notes (D4, C4), and finally a whole note G4.

Musical notation for page 59, consisting of two staves in 4/4 time. The first staff contains a sequence of notes: a whole note G4 (marked with a circled '1' and 'p'), followed by two eighth notes (F#4, E4), then two eighth notes (D4, C4), then a whole note G4, followed by two eighth notes (F#4, E4), then two eighth notes (D4, C4), and finally a whole note G4. The second staff continues with a sequence of notes: a whole note G4, followed by two eighth notes (F#4, E4), then two eighth notes (D4, C4), then a whole note G4, followed by two eighth notes (F#4, E4), then two eighth notes (D4, C4), and finally a whole note G4.